

Technische Universität Dortmund | D-44221 Dortmund

Sehr geehrter Herr
Prof. Dr. Jens Teubner (PERSÖNLICH)

Auswertungsbericht zur studentischen Lehrveranstaltungsbeurteilung

Sehr geehrter Herr Prof. Dr. Teubner,
als Anlage erhalten Sie die Ergebnisse der automatisierten Auswertung zu Ihrer Veranstaltung
"Architektur und Implementierung von Datenbanksystemen" im Rahmen der studentischen
Lehrveranstaltungsbeurteilung.

Der Ergebnisbericht gliedert sich in drei Abschnitte:

a) Auswertung der geschlossenen Fragen

In diesem Abschnitt werden die Ergebnisse der geschlossenen Skalafragen grafisch durch ein Histogramm und ergänzt durch numerische Angaben aufbereitet. Zu den statistischen Kennzahlen zählen die relativen Antworthäufigkeiten sowie zusätzlich das arithmetische Mittel, der Median, die Standardabweichung und die Anzahl der Nennungen.

b) Profillinie

Zur schnellen und übersichtlichen Orientierung zeichnet die Profillinie eine gestrichelte Linie der Mittelwerte zu den Skalafragen. Zusätzlich werden der Mittelwert und die Anzahl der Nennungen numerisch angegeben.

c) Auswertung der offenen Fragen

Die Auswertung der offenen Fragen wird in Form von Bildausschnitten dargestellt. Wurde eine Online-Befragung durchgeführt bzw. die Handschriften manuell erfasst, erscheinen die Antworten entsprechend in Maschinenschrift.

Wurden für den verwendeten Fragebogen (FK04TU8) Globalindikatoren definiert, werden diese am Anfang des Berichtes dargestellt. Die Indikatoren bilden den Mittelwert zu einer thematischen Fragengruppe und ermöglichen einen schnellen Überblick über die Ergebnisse der Befragung.

Für Rückfragen zur Lehrevaluation wenden Sie sich bitte an die Ansprechpartnerin bzw. den Ansprechpartner in Ihrer Fakultät.

Bei technischen Fragen stehe ich Ihnen gerne zur Verfügung.

Mit freundlichen Grüßen

i.A.

Urs Heidemann (EvaSys Administrator)

Technische Universität Dortmund
Dezernat Hochschulentwicklung und Organisation
Abteilung Strategie und Qualitätsmanagement
Tel.: 0231/755-2254 Fax: -6463
urs.heidemann@tu-dortmund.de



Prof. Dr. Jens Teubner

Architektur und Implementierung von Datenbanksystemen (41211_SoSe18)
Erfasste Fragebögen = 14

Globalwerte

Globalindikator

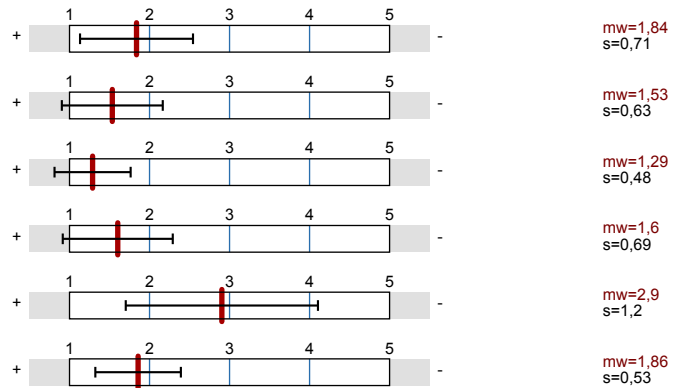
Evaluation of the content of the course

Evaluation of lectures

Evaluation on course and lecture materials

Evaluation of the tutorials

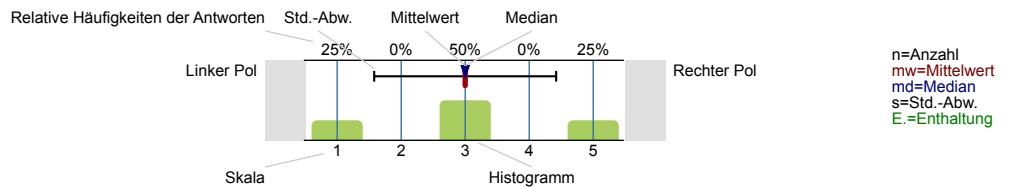
Overall score for the course



Auswertungsteil der geschlossenen Fragen

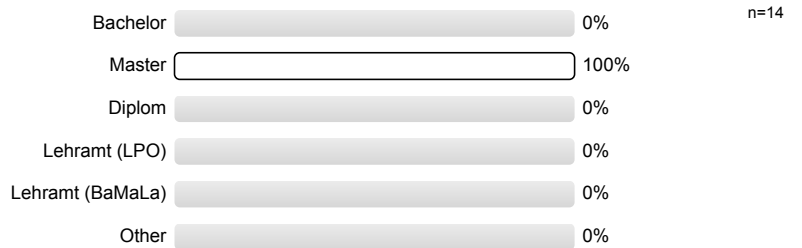
Legende

Fragestext

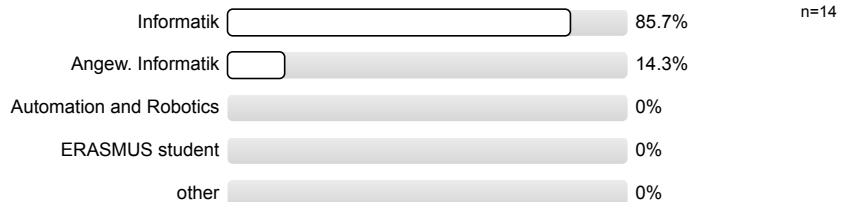


2. Statistical Informations

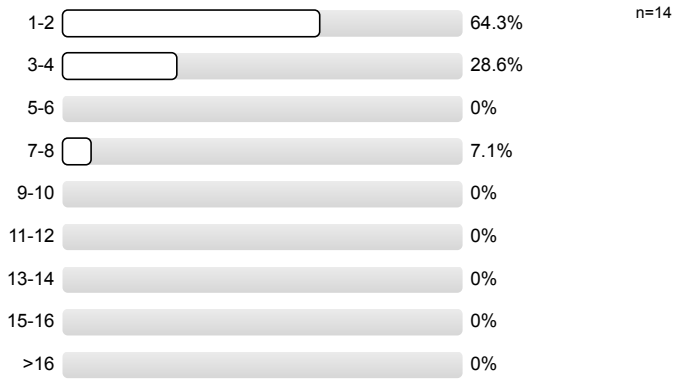
2.1) Traget degree



2.2) Programme



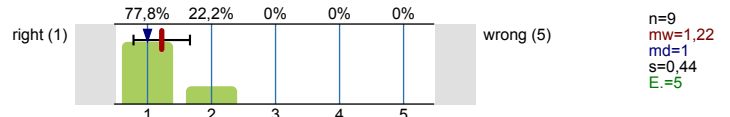
2.3) Current term in your current programme of study (e.g., tick 3-4 if you are in the 3. semester of the Master programme)



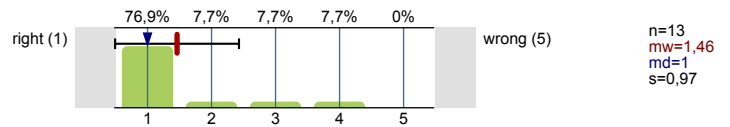
3. Evaluation of the content of the course:



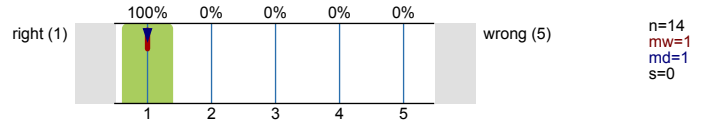
3.10) The content matches course descriptions.



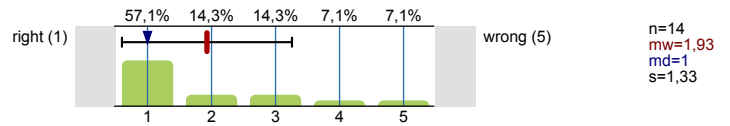
3.11) The course is well organized (announced early enough, up-to-date web page, sufficient consulting).



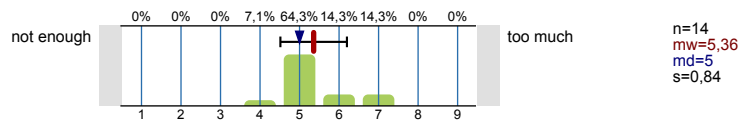
3.12) The room is suitable for the course.



3.13) The time frame is appropriate for the course (duration, date and time, overlap with other courses).

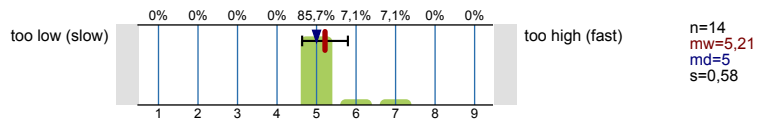


3.14) The course contains not enough/the right amount /to much content.

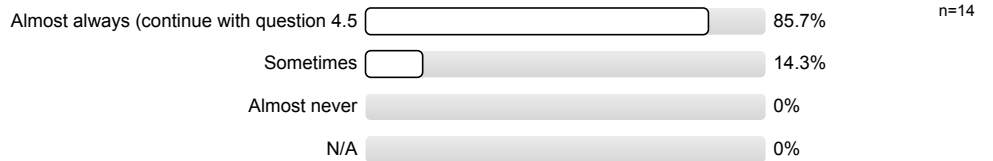


4. Evaluation of lectures

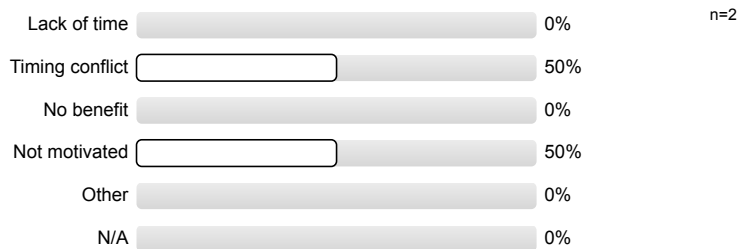
4.1) The speed of the lectures is...



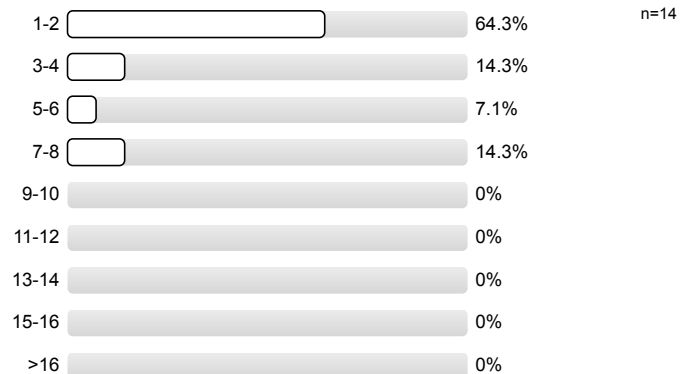
4.2) I attend lectures:



4.3) Reason for skipping lectures:



4.5) How many hours per week do you spend on home work, including preparing for the lectures, and on the assignments?

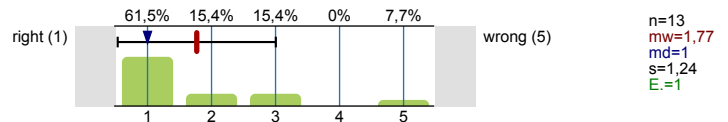


<p>4.6) The lecturer uses examples and visualizations to make the lecture easier to understand and to add variety.</p>		<p>wrong (5) n=14 mw=1,43 md=1 s=0,65</p>
<p>4.7) The lecturer is well prepared.</p>		<p>wrong (5) n=14 mw=1 md=1 s=0</p>
<p>4.8) The lecturer is highly motivated and enthusiastic about the material.</p>		<p>wrong (5) n=13 mw=1 md=1 s=0</p>
<p>4.9) The lecturer explains facts in a simple, understandable and clear manner (and not in a complicated and confusing manner).</p>		<p>wrong (5) n=14 mw=1,43 md=1 s=0,65</p>
<p>4.10) The lecturer focuses largely on the essentials, instead of caring about non-essentials or digressing frequently.</p>		<p>wrong (5) n=14 mw=1,29 md=1 s=0,47</p>
<p>4.11) There exists a dialogue between lecturer and audience, at least at times. For example: The lecturer - queries, whether the audience understood the material - raises questions about the content (at an adequate level) - is sufficiently available for questions.</p>		<p>wrong (5) n=14 mw=1,29 md=1 s=0,61</p>
<p>4.12) The lecturer uses introductions, repetitions, and summaries to help understanding the lectures.</p>		<p>wrong (5) n=14 mw=1,71 md=1 s=1,07</p>
<p>4.13) Acoustics and English (including pronunciation) are good.</p>		<p>wrong (5) n=14 mw=1,14 md=1 s=0,36</p>

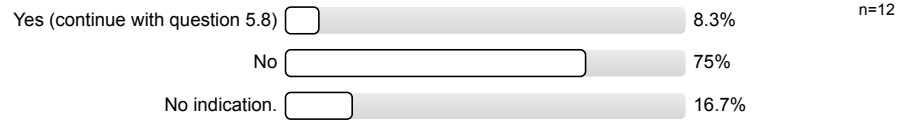
5. Evaluation on course and lecture materials

<p>5.1) The handwriting of the lecturer (on the black board or the overhead projector) helps understand the lecture and its content (well readable, well-structured, enough time for copying).</p>		<p>wrong (5) n=14 mw=1,36 md=1 s=0,5</p>
<p>5.2) Beamer or printed overhead slides help understand the lecture and its content (available before the lecture, few errors, well-structured, sufficiently large font etc.).</p>		<p>wrong (5) n=14 mw=1,43 md=1 s=0,65</p>
<p>5.3) Provided slides and manuscript are ideally suited for reading after the lectures (match the lectures, can be used to prepare for the exam, errors are corrected, etc.).</p>		<p>wrong (5) n=14 mw=1,93 md=2 s=1,07</p>
<p>5.4) Developed material is provided (material is provided and it contains all necessary explanations, contains few errors, has been published as a book...).</p>		<p>wrong (5) n=12 mw=1,5 md=1 s=0,67 E.=2</p>

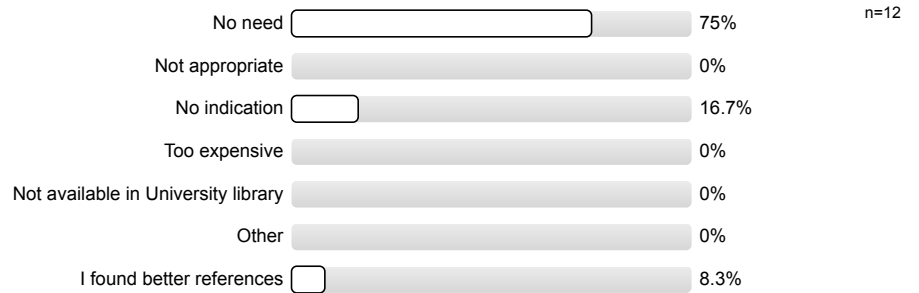
5.5) Slides and manuscript are easy to obtain in-time (e.g. through the internet).



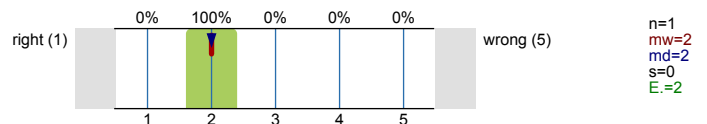
5.6) Are you using the recommended references?



5.7) If no, why not?

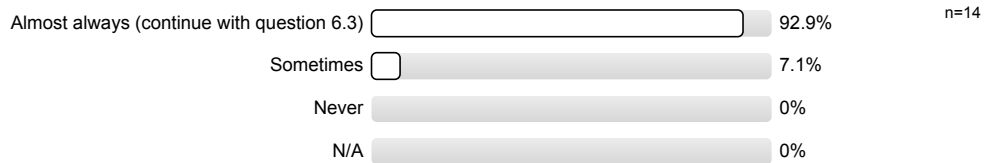


5.8) The references are ideal for the reading after the lectures.



6. Evaluation of the tutorials:

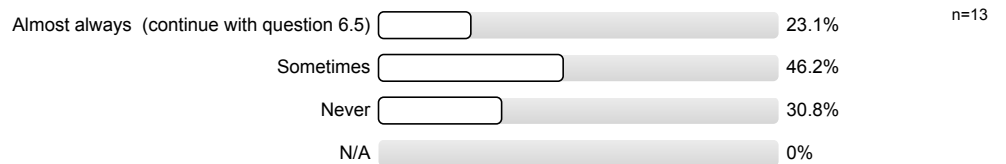
6.1) I attend the tutorials:



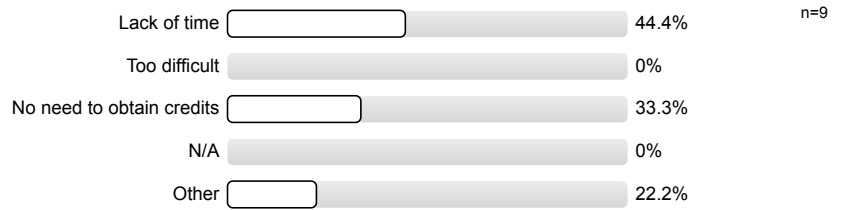
6.2) Reason for skipping tutorial:



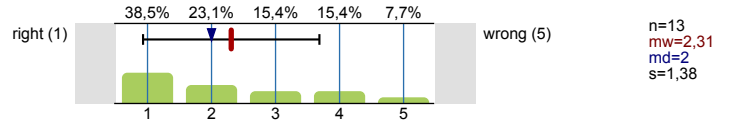
6.3) I work on assignments:



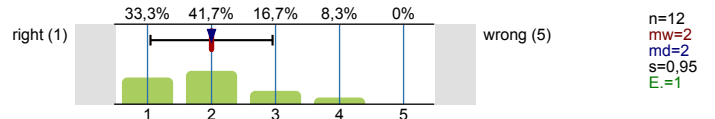
6.4) Reason for skipping assignments



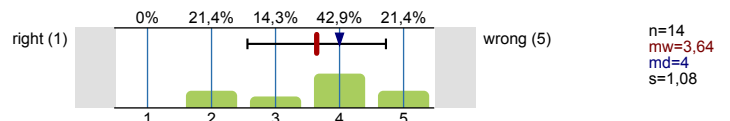
6.5) Tutorials are contributing towards understanding the content of the lectures/the course.



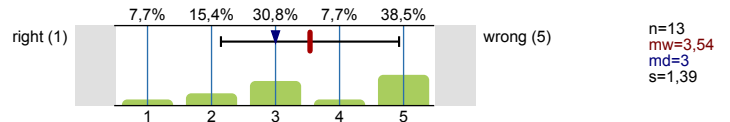
6.6) Content and timing of the assignments match the lectures.



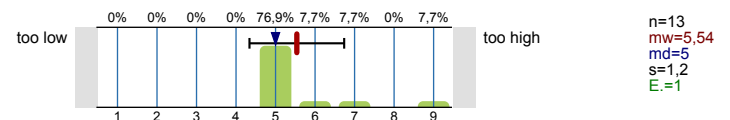
6.7) The presentation of solutions for the assignments can be understood easily.



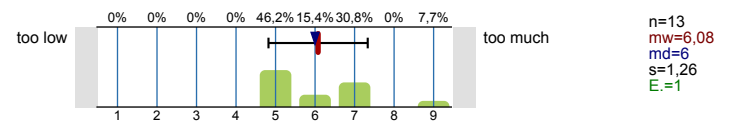
6.8) Tutorials are run by competent and well-prepared faculty members.



6.9) The level for solving the assignments is...

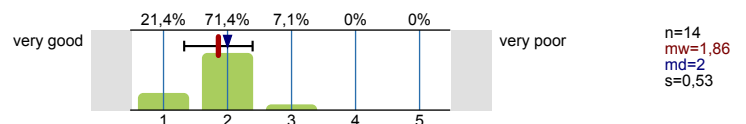


6.10) The effort for solving the assignments is...



7. Overall score for the course

7.1) What is your overall score for this course?

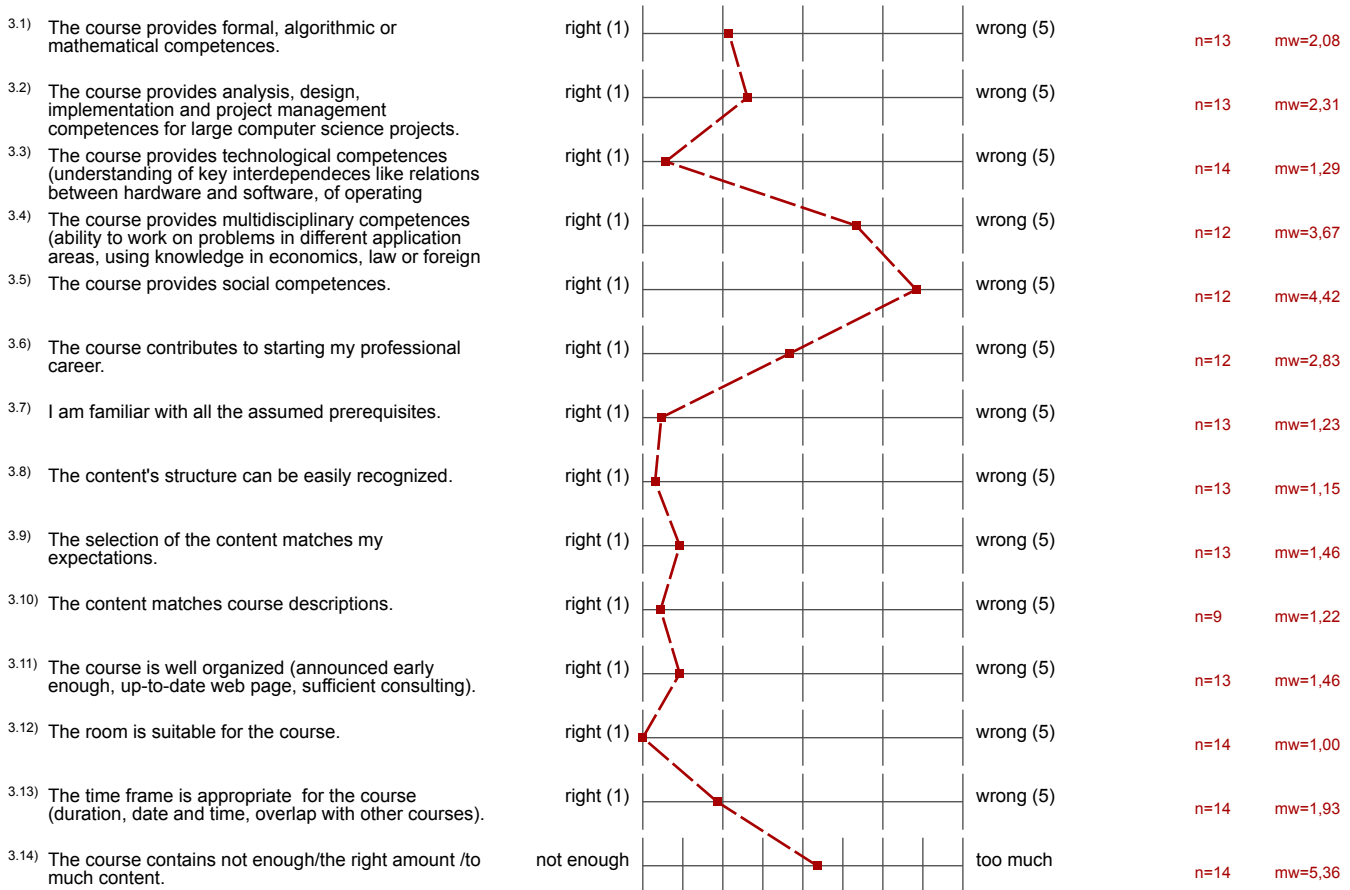


Profillinie

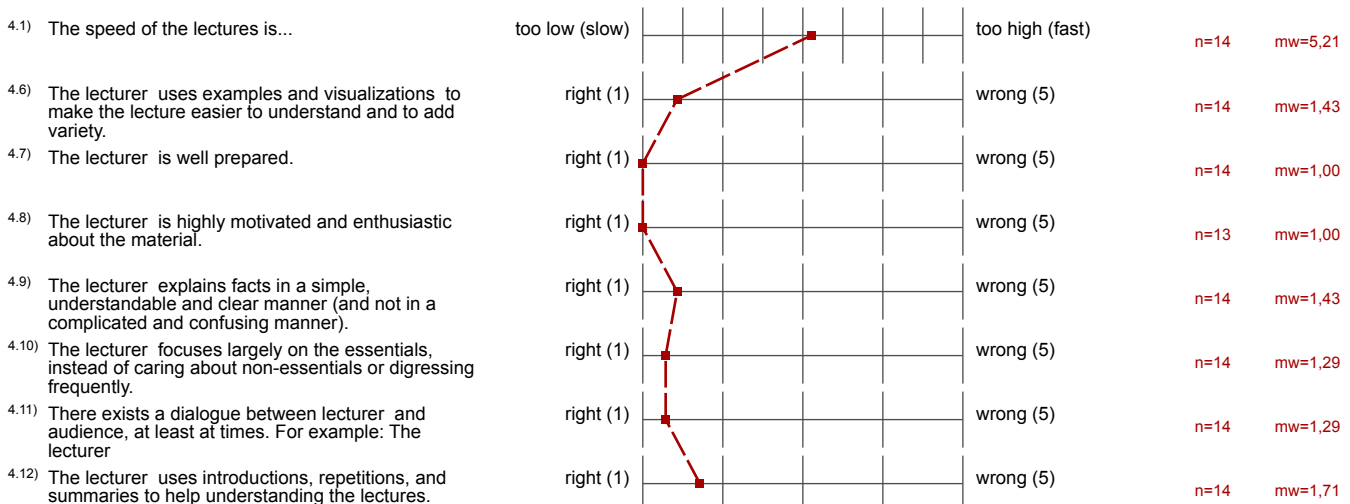
Teilbereich: Fakultät 04 Informatik
 Name der/des Lehrenden: Prof. Dr. Jens Teubner
 Titel der Lehrveranstaltung: Architektur und Implementierung von Datenbanksystemen (41211_SoSe18)
 (Name der Umfrage)

Verwendete Werte in der Profillinie: Mittelwert

3. Evaluation of the content of the course:



4. Evaluation of lectures



4.13) Acoustics and English (including pronunciation) are good.



n=14 mw=1,14

5. Evaluation on course and lecture materials

5.1) The handwriting of the lecturer (on the black board or the overhead projector) helps understand the lecture and its content (well readable, well-



n=14 mw=1,36

5.2) Beamer or printed overhead slides help understand the lecture and its content (available before the lecture, few errors, well-structured, sufficiently large



n=14 mw=1,43

5.3) Provided slides and manuscript are ideally suited for reading after the lectures (match the lectures, can be used to prepare for the exam, errors are corrected,



n=14 mw=1,93

5.4) Developed material is provided (material is provided and it contains all necessary explanations, contains few errors, has been published as a book...).



n=12 mw=1,50

5.5) Slides and manuscript are easy to obtain in-time (e.g. through the internet).



n=13 mw=1,77

5.8) The references are ideal for the reading after the lectures.



n=1 mw=2,00

6. Evaluation of the tutorials:

6.5) Tutorials are contributing towards understanding the content of the lectures/the course.



n=13 mw=2,31

6.6) Content and timing of the assignments match the lectures.



n=12 mw=2,00

6.7) The presentation of solutions for the assignments can be understood easily.



n=14 mw=3,64

6.8) Tutorials are run by competent and well-prepared faculty members.



n=13 mw=3,54

6.9) The level for solving the assignments is...



n=13 mw=5,54

6.10) The effort for solving the assignments is...



n=13 mw=6,08

7. Overall score for the course

7.1) What is your overall score for this course?



n=14 mw=1,86

Auswertungsteil der offenen Fragen

4. Evaluation of lectures

5. Evaluation on course and lecture materials

6. Evaluation of the tutorials:

7. Overall score for the course